

Information Brief

Get a Good Installation of Clay Pipe in Deep, Wet, Moveable Soil

- Weak cement makes strong bedding
- Inspection before backfill is critical
- No flotation (it's a Bingham fluid)



GET THE BENEFITS OF OPEN TRENCH CLAY PIPE

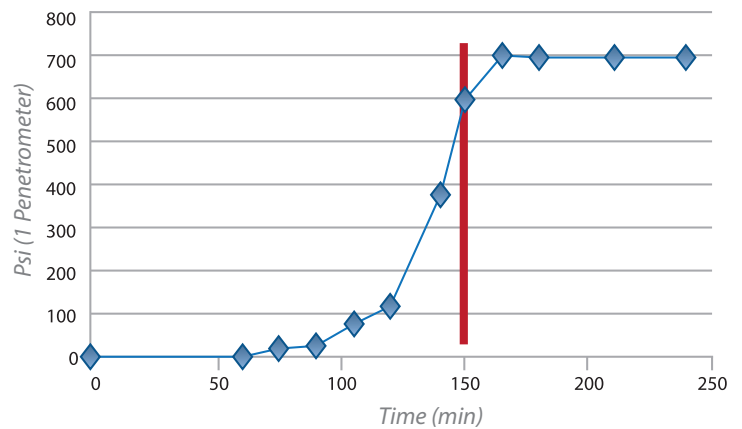
For years jurisdictions had installation problems and didn't get the sewer line they designed. We saw that the issues stemmed from deep burial, poor soils, concrete arches & cradles, and the lack of sufficient training for contractors in proper installation techniques. That's why we developed and perfected CLSM.

4 CRITICAL CONCEPTS

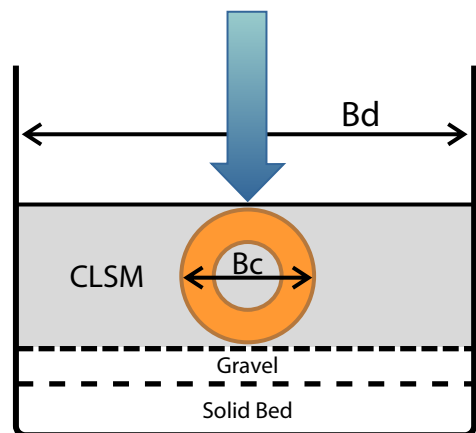
1. Set time is critical (affects bedding factor)
2. Getting it right requires a penetrometer and a trained inspector on-site (we can help)
3. Sequence of events (follow standard process)
4. Longer service life overcomes added cost

CLSM (Controlled Low Strength Material) is a bedding technique that helps ensure proper installation of open trench clay pipe in challenging conditions. CLSM uses a standard two-bag mix slurry readily available from most quarries.

"WHEN YOU BACKFILL" IS CRITICAL



Weight on Pipe no Longer Goes up as a Square of the Trench Width



mission clay products LLC

Mission Clay Products

Mission Clay Products, LLC
 23835 Temescal Canyon Road Corona, CA 92883
 www.missionclay.com | info@missionclay.com
 Phone: (951) 277-4600 | Fax (951) 277-1127