

Information Brief

Clay Pipe Today is Very Different than Yesterday

- Much Higher Strength
- Sealed Joints Keep Roots Out
- Modern Manufacturing Methods



Ghosts of the Past

The knocks on clay sewer pipe used to be:

- Cracks (fragile)
- Joints don't last (root intrusion)
- Requires firm & unyielding bedding

Those Issues Have Been Resolved

Real world stress tests and field data show:

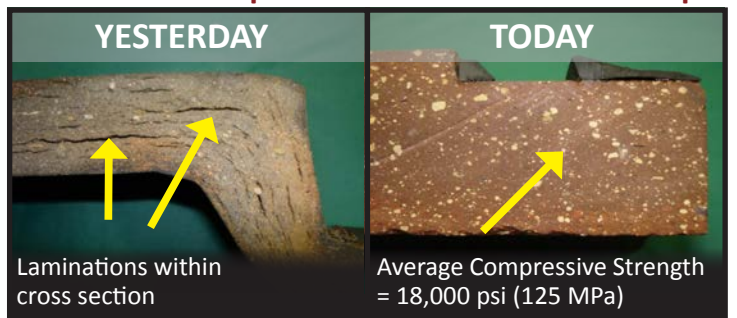
- Modern clay pipe is made with vastly improved manufacturing and quality control methods
- Modern joints are made with elastomeric compounds and tested to far exceed industry specifications
- New bedding methods increase pipe strength

Still, Clay Sewer Pipe Isn't Right for Every Job.

It requires specific handling and installation methods. So we deliver training to help you get the benefits you design. And your rate payers get a project that lasts hundreds of years.

What's best for your project? That of course depends on a variety of factors. Other materials may make more sense. Let's discuss your next project and the trade-offs involved.

Hand-molded Pipe vs. Automated Extrusion Pipe



Hand-Poured Joints vs. Factory Applied Joints



"Clay will never wear out. It's abrasion resistant and inert. Now with modern joints and good installation practices, its life expectancy is unsurpassed."

*Rob Hamers, Consulting Engineer
Costa Mesa, California*



NATIONAL CLAY PIPE INSTITUTE



mission clay products llc

Mission Clay Products

Mission Clay Products, LLC
23835 Temescal Canyon Road Corona, CA 92883
www.missionclay.com | info@missionclay.com
Phone: (951) 277-4600 | Fax (951) 277-1127